

Data Sheet

MODEL L2

REMOTE MOUNT BLOCK AND BLEED
TWO VALVE MANIFOLD



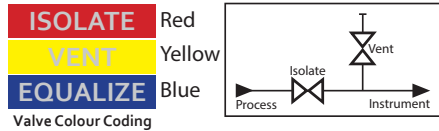
Supplied by

247cable.com

Call us on +44 (0)118 916 9420 | Email info@247able.com

MODEL - L2

REMOTE MOUNT BLOCK AND BLEED TWO VALVE MANIFOLD 413 bar (6000 psi)



APPLICATION

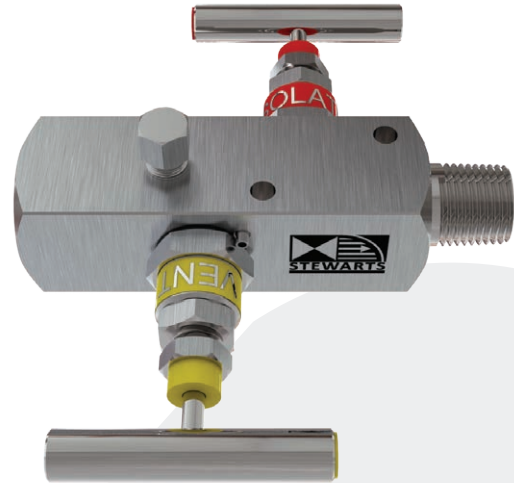
Using The 2-Valve Manifold

In normal operation the "isolate" valve is open while the "vent" valve is closed. To remove the instrument, first close the "isolate" valve, then open the "vent" valve to relieve pressure upstream of the "isolate" valve.

Calibration Options

By connecting a calibration gauge to the vent port, it is possible to check the calibration of the instrument without removing it from the installation.

Also available in a range of other materials and options (See HOW TO ORDER Data Sheet)



WEIGHT = 1.0 kg

