

Data Sheet

KFD0-SD2-EX1.1045



Supplied by

247cable.com

Call us on +44 (0)118 916 9420 | Email info@247able.com

Solenoid Driver

KFD0-SD2-Ex1.1045

Features

- 1-channel isolated barrier
- 24 V DC supply (loop powered)
- Current limit 45 mA at 10 V DC
- Up to SIL3 acc. to IEC 61508

Function

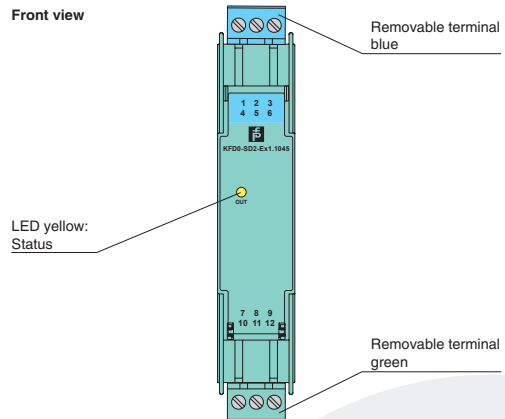
This isolated barrier is used for intrinsic safety applications. It supplies power to solenoids, LEDs, and audible alarms located in a hazardous area.

It is loop powered, so the available energy at the output is received from the input signal. The output signal has a resistive characteristic. As a result the output voltage and current are dependent on the load and the input voltage.

At full load, 10 V at 45 mA is available for the hazardous area application.

Assembly

Front view

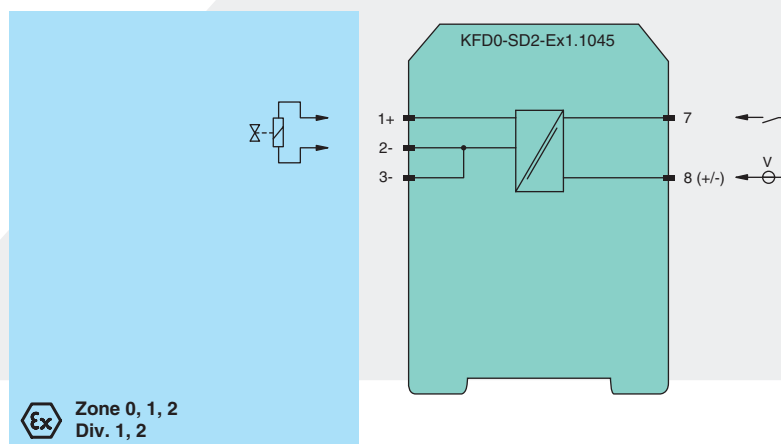


CE



SIL3

Connection



Technical data

KFD0-SD2-Ex1.1045

General specifications		
Signal type		Digital Output
Supply		
Rated voltage		loop powered
Power loss		< 1.05 W (≤ 30 V)
Input		
Connection		terminals 7, 8
Rated voltage	U_i	20 ... 35 V DC
Current		72 mA at 20 V input voltage, load = 220 Ω 50 mA at 35 V input voltage, load = 220 Ω
Inrush current		≤ 200 mA after 100 μ s
Output		
Connection		terminals 1+, 2-
Internal resistor	R_i	≤ 282 Ω
Current	I_e	≤ 45 mA
Voltage	U_e	≥ 10 V
Open loop voltage	U_s	≥ 22.7 V
Output rated operating current		45 mA
Output signal		These values are valid for the rated operating voltage 20 ... 35 V DC.
Energized/De-energized delay		single operation: typ. 1.7 ms/50 μ s; periodical: typ. 5 μ s/50 μ s
Directive conformity		
Electromagnetic compatibility		
Directive 2004/108/EC		EN 61326-1:2006
Conformity		
Electromagnetic compatibility		
Protection degree		NE 21:2006
Protection against electrical shock		IEC 60529:2001
		UL 61010-1:2004
Ambient conditions		
Ambient temperature		-20 ... 60 $^{\circ}$ C (-4 ... 140 $^{\circ}$ F)
Mechanical specifications		
Protection degree		IP20
Mass		approx. 100 g
Dimensions		20 x 107 x 115 mm (0.8 x 4.2 x 4.5 in) , housing type B1
Mounting		on 35 mm DIN mounting rail acc. to EN 60715:2001
Data for application in connection with Ex-areas		
EC-Type Examination Certificate		
Group, category, type of protection		BASEEFA 06 ATEX 0252 , for additional certificates see www.pepperl-fuchs.com Ex II (1)G [Ex ia Ga] IIC, II (1)D [Ex ia Da] IIIC, I (M1) [Ex ia Ma] I (-20 $^{\circ}$ C $\leq T_{amb} \leq 60$ $^{\circ}$ C)
Voltage	U_o	25.2 V
Current	I_o	93 mA
Power	P_o	590 mW
Input		
Maximum safe voltage	U_m	250 V (Attention! The rated voltage can be lower.)
Statement of conformity		
Group, category, type of protection, temperature class		TÜV 99 ATEX 1499 X , observe statement of conformity Ex II 3G Ex nA II T4 [device in zone 2]
Electrical isolation		
Input/Output		safe electrical isolation acc. to IEC/EN 60079-11, voltage peak value 375 V
Directive conformity		
Directive 94/9/EC		EN 60079-0:2012 , EN 60079-11:2012 , EN 60079-15:2010
International approvals		
FM approval		
Control drawing		266-031FM-12 (cFMus)
UL approval		
Control drawing		116-0316 (cULus)
IECEx approval		
		IECEx BAS 06.0058
General information		
Supplementary information		EC-Type Examination Certificate, Statement of Conformity, Declaration of Conformity, Attestation of Conformity and instructions have to be observed where applicable. For information see www.pepperl-fuchs.com .

Reading Office

Cutbush Park, Danehill, Lower Earley,
Reading, Berkshire. RG6 4UT. UK.
Tel: +44 (0)118 9311188
Email: info@able.co.uk

Aberdeen Office

Unit 6 Airside Business Park, Kirkhill Industrial Estate,
Dyce, Aberdeen. AB21 0GT. UK.
Tel: +44 (0)1224 725999
Email: ab@able.co.uk

Internet: www.able.co.uk
e-procurement: www.247able.com
Registered in England No: 01851002
VAT No: GB 417 2481 61

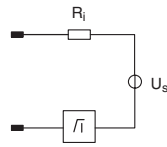


Technical data

KFD0-SD2-Ex1.1045

Output characteristics

Output circuit diagram



Output characteristic

